



DEELTIJD  
**SCHAKELKLASSEN**  
ENSCHEDÉ

**Information for teachers when discussing the application for the arrangement part-time bridging classes Enschede with parents.**

**The conversation with parents:**

**What does the Part-time bridging classes package entail when your son/daughter is placed in a bridging class?**

Your son/daughter attends a transition class at location x 2 days a week.

In case the transition class is outside your own school, you will have to drop off your son/daughter at 8.30 am and pick him up at 2.00 pm.

What does your son/daughter do in the transition class:

Catching up in the areas of:

- Vocabulary
- Creating Sentences
- Pronouncing sounds in Dutch
- Understanding picture books and being able to answer questions.
- Applying what you have learned in play

Or

**What does the part-time bridging class package entail for support for ambulatory co-teaching:**

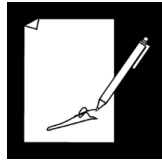
Support for your son/daughter's teacher (on average 1 x p.w.) in giving lessons in the areas of:

- Vocabulary or
- Create sentences or
- Pronouncing sounds in Dutch or
- Understanding picture books and being able to answer questions.

Your son/daughter will practice what they have learned in a small group after class.  
In this way, your son/daughter can catch up in his own class.

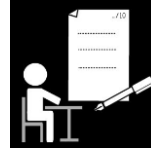
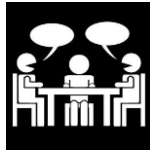
**Step-by-step plan**

**Giving permission for observation, taking vocabulary tests and the application**

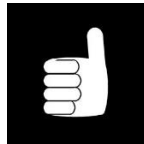


Drawing does not mean placement

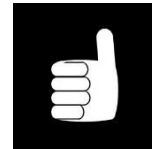
**Observation in the group and administering vocabulary test**



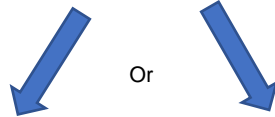
**The school decides to apply**



**Placement**

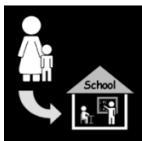


The request has been approved

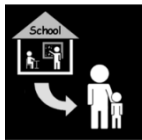


**Transition class**

Location to be announced

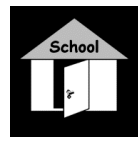


off at 8.30 a.m. (2 x p.w.)

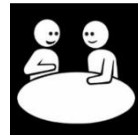


Pick up at 14.00 hrs (2x p.w.)

**Ambulant co-teaching**



Support at your own school (1x p.w.)



For the teacher



and registered student.

All students will be given a trial placement until the autumn holidays to see if the arrangement is suitable. Before the autumn holidays, it will become clear whether the placement will be final.

Final placement.

Duration of the placement is 1 year.